

# Bridlewood Library Expansion / Relocation

**Presenters:** Michelle Alleyne, Area Manager, Toronto Public Library  
Gail Rankin, Senior Manager, Facilities Management  
Ken Fukushima, Ken Fukushima Architecture  
David Fujiwara, Main Street Architecture  
Ashley Sealy, Library Service Manager, Toronto Public Library  
Leo Wong, Branch Head, Bridlewood Branch

**November 16, 2021 6:30 – 8:00 pm**



## Land Acknowledgement

*Toronto Public Library is situated on Indigenous land and Dish with One Spoon territory. This is the traditional territory of the Haudenosaunee (ho-den-oh-sho-nee) Confederacy, the Wendat, and the Mississaugas of the Credit First Nation. Toronto Public Library gratefully acknowledges these Indigenous nations for their guardianship of this land.*

# Agenda

1. Welcome and introductions – Michelle Alleyne
2. Comments - Councillor Nick Mantas
3. Project Background – Ashley Sealy
4. Community consultation - Leo Wong
5. Consultant Architect on design– Ken Fukushima & David Fujiwara
6. Project schedule and next steps – Gail Rankin
7. Questions and Comments
8. Wrap-up – Michelle Alleyne

# Councillor Remarks

## **Councillor Nick Mantas**

Contact Information

Toronto City Hall

100 Queen Street West, Suite A1

Toronto, ON M5H 2N2

Telephone: 416-392-1374

Fax: 416-392-7431

Email: [Councillor\\_Mantas@toronto.ca](mailto:Councillor_Mantas@toronto.ca)

Scarborough-Agincourt Constituency Office

3850 Finch Avenue East, Unit G7

Toronto, ON M1T 3T6

Telephone: 416-321-2788

Fax: 647-723-0287

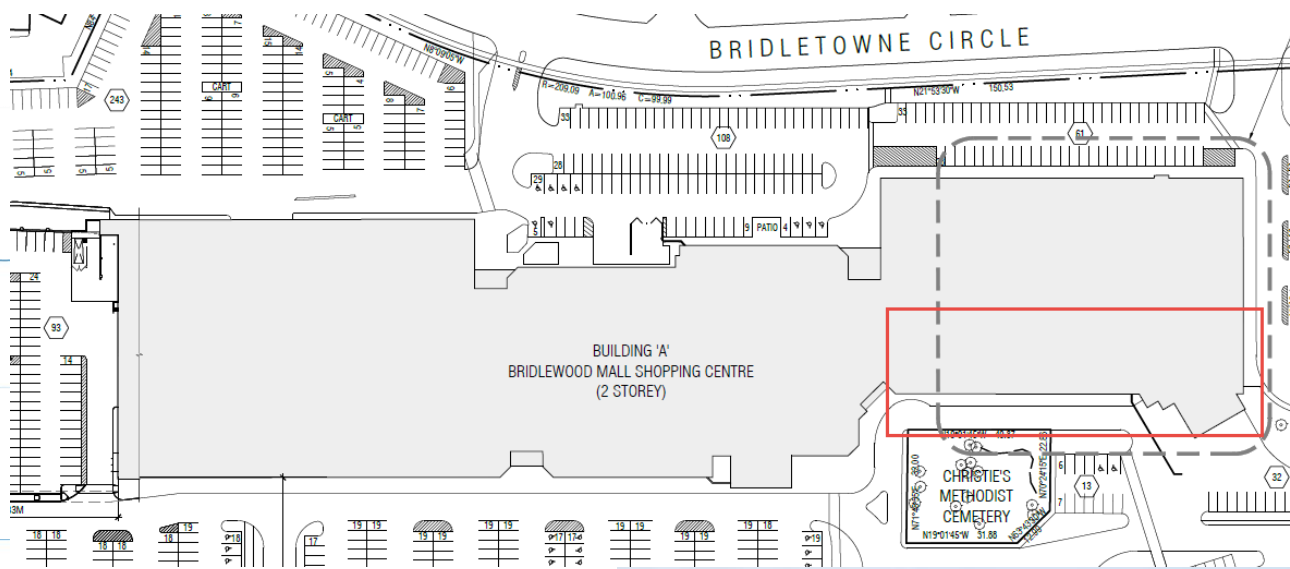


# Project Background

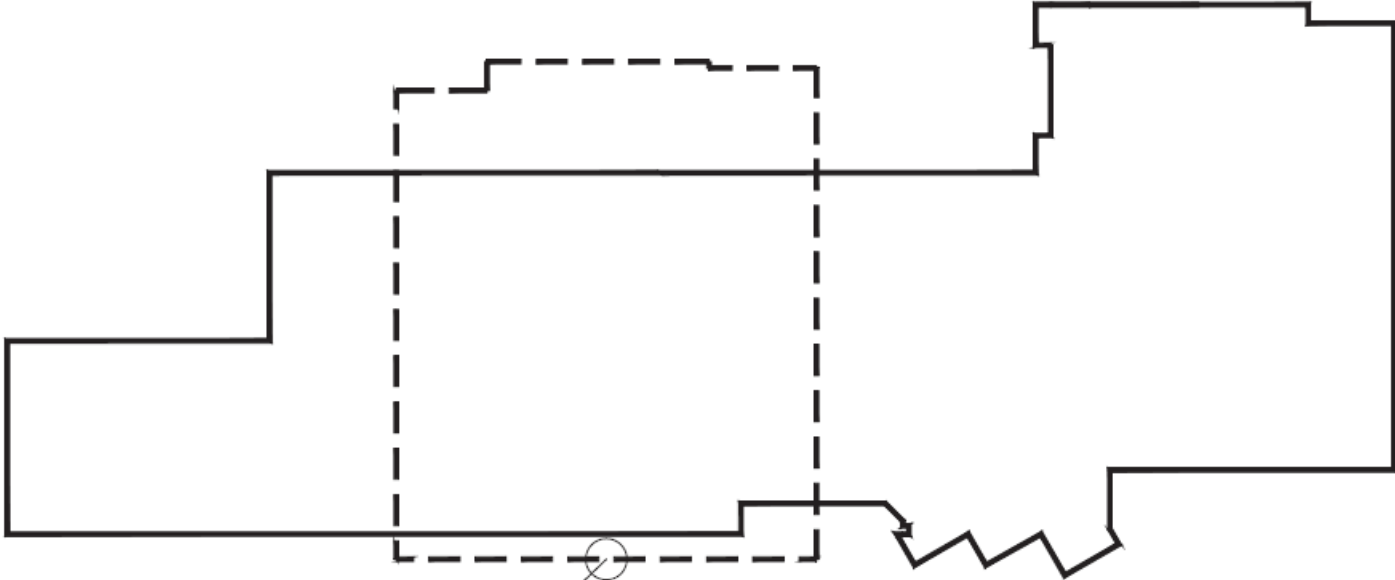
## Project Scope



# New Location



# Size Comparison



AREA OF EXISTING  
BRANCH



Stakeholders consultation is an important part of every project

## Public consultation to date:

- Councillor Mantas was consulted and informed of progress
- **67** people attended the online Bridlewood Renovation Open House on Apr 19
- **45** respondents completed the online survey through Apr-Jun
- **115** community members consulted from remote outreach efforts to various local organizations including ACSA, AWIC, Chester Le CC, CICS, NAMF, Reading Circle, SPLC and UTSC First Nations House
- Staff provided suggestions and feedback they heard from customers over the years



# Consultation

## The design will deliver what was asked for during consultation

What you asked for	Existing	New branch	Achieved
More space	7,590 sq ft	20,000 sq ft	✓
Quiet study rooms	None	2 group study rooms and 2 study booths	✓
More study tables with access to power	One table with power and 10 study carrels	6 large study tables, 2 laptop bars with power and 8 study carrels with power	✓
More computer stations	7 computer stations	21 computer stations and a neighbourhood tech kit	✓
Better WiFi connection		Wifi will be improved and cover outdoor areas	✓
Better acoustics	Limited zoning and acoustic treatment	Zoned area for children and enclosed area for Teens; Acoustical treatment throughout	✓
Better program spaces that aren't open	No enclosed program room	1 large meeting room and 1 community meeting room	✓
Comfortable chairs, areas for socializing	8 lounge seats at the front of the library	Comfortable seating throughout	✓
Better lighting	Fluorescent lighting	New softer LED lighting with lots of natural light	✓
More collections	52,000 item collection	More adult and children's materials	✓

# Floor Plan – Interior Layout



# Exterior Renderings

Warden Avenue façade with view of the Reading Deck



# Exterior Renderings

View of the north wall



# Exterior Renderings

The view coming up the driveway from Warden Ave.

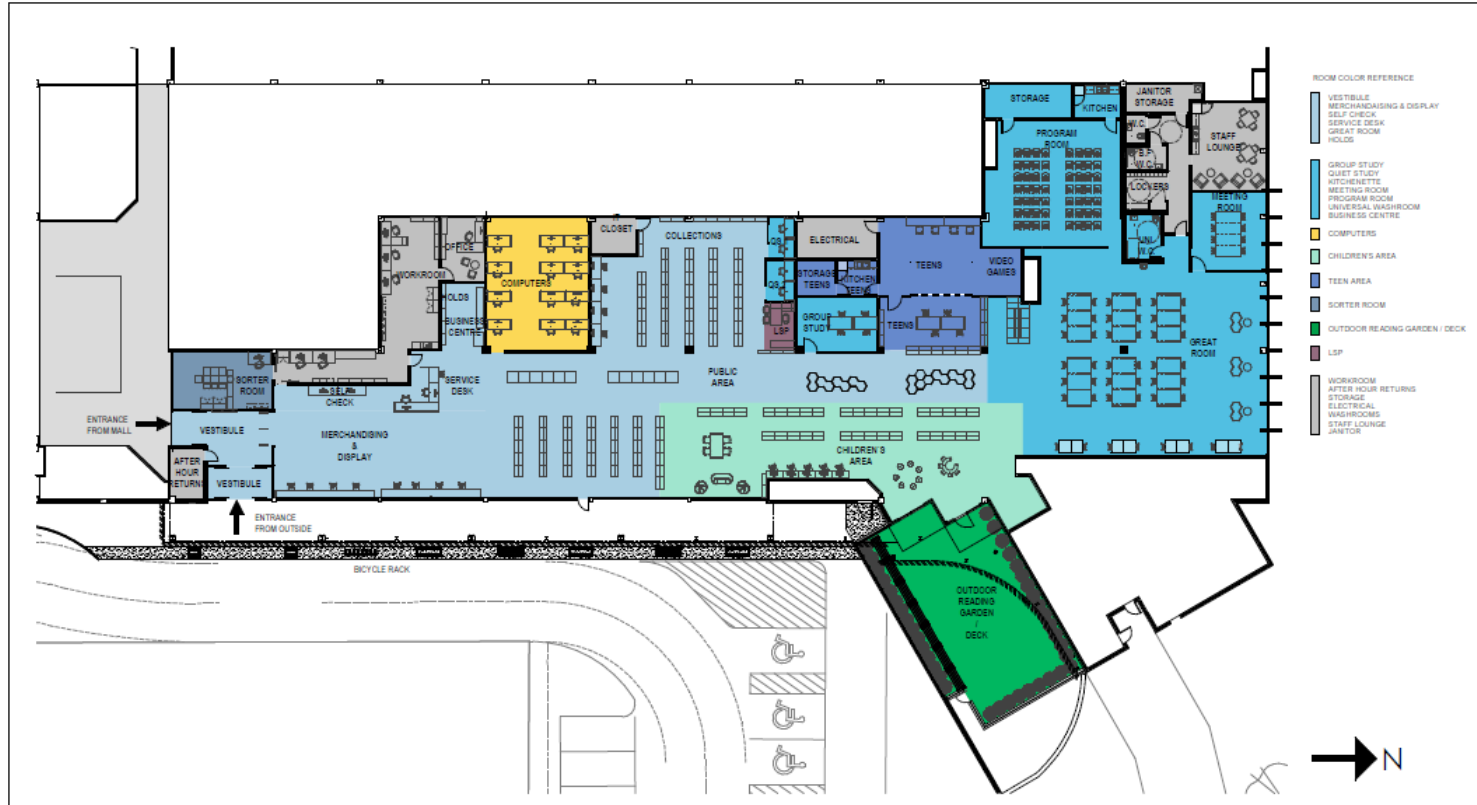


# Exterior Renderings

View of the south/east side



# Floor Plan – Interior Layout



# Architect 3D Models

Mall interior - a view inside the library; allows for returns into a book drop workroom





# Architect 3D Models

Branch interior from the entrance



# Architect 3D Models

Branch interior – service desk looking toward the back of branch



# Architect 3D Models

Branch interior – looking toward the Great Room



# Architect 3D Models

Branch interior – in the Great Room with new windows to the north



# Architect 3D Models

Branch interior – view toward the Program Room



# Architect 3D Models

Branch interior – looking back toward the service desk



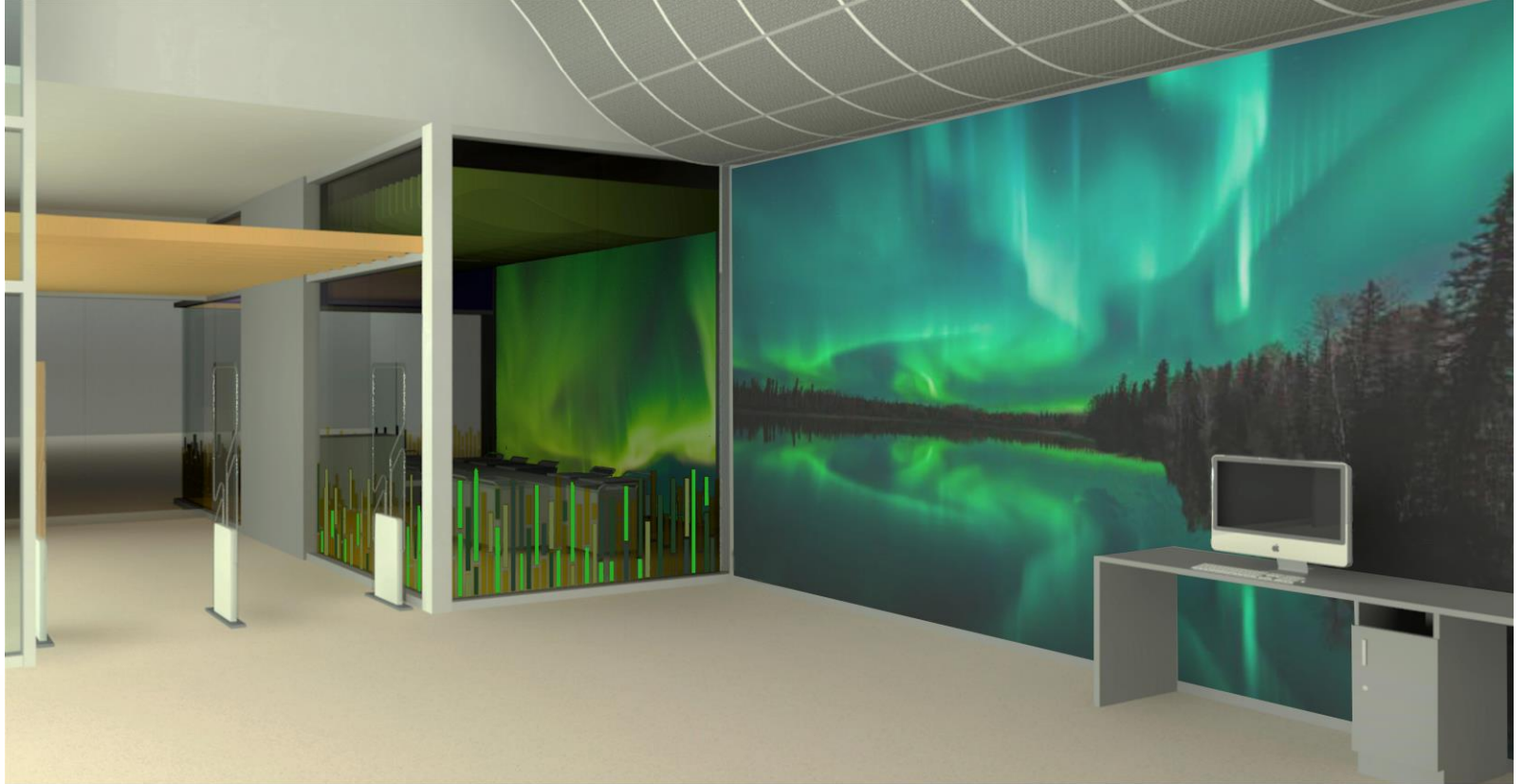
# Architect 3D Models

Branch interior – looking toward the new entrance from outside



# Architect 3D Models

Branch interior – self check and looking toward the mall





# Next steps: Schedule

The schedule has been impacted by COVID-19





# Questions and feedback

Do you have any questions about what you just saw?

What programs and/or services you would like to see offered at the new branch?



**Thank you**

**tpl:**