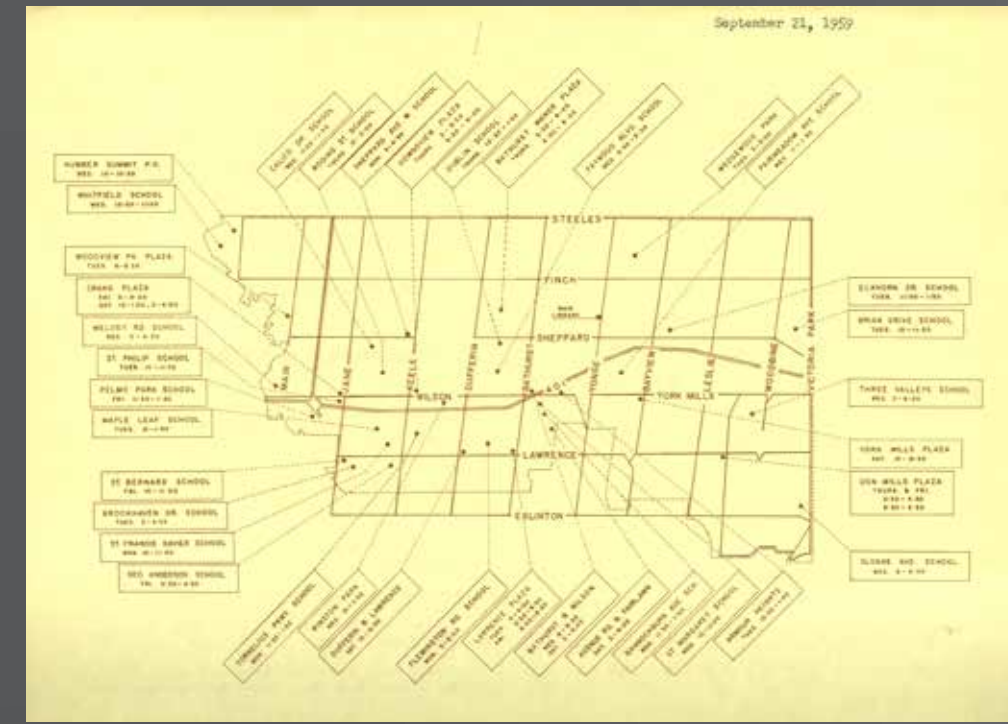


Historical Background

- 1959 North York Public Library Board extends bookmobile service to the Jane/Sheppard neighbourhood with stops at Sheppard Avenue West School and Calico Drive School, 21-23 September.
- 1964 Bookmobile service is extended to several major new residential areas including York-Towne Estates (Jane and Finch), Greenwin Gardens (Keele and Sheppard) and the Spenvally School neighbourhood (Jane and Sheppard), spring.
- 1966 Jane Sheppard intersection is identified as a desirable site for a community branch in a survey of North York Public Library branch needs.
- 1981 A deposit collection, open 17.5 hours a week, is placed in the Northwood Community Centre, 15 Clubhouse Court, officially opened in the former clubhouse of the old Northwood Golf and Country Club, 24 September. Bookmobile service on Jane Street is increased to two hours each at the Jane Sheppard Mall and Arleta and Sheppard avenues.
- 1986 No. 31 Police Station, built and opened in 1962 on Sheppard Avenue West near the intersection of Jane Street, is considered for reuse as a library branch once the new police station on Norfinch Drive is completed in 1987.
- 1987 North York Parks and Recreation Department asks North York Public Library to consider closing its deposit collection at the Northwood Community Centre or to reduce its space by 50 percent, June.
- 1988 North York Public Library Board and City Council approve opening a community branch at Jane and Sheppard. Space of 315 square metres (3,500 square feet) is leased from Borins & Borins, owners of the Jane Sheppard Mall, built in 1967 at the northeast corner of the intersection, and renovated and expanded in 1987-88.
- 1989 Jane/Sheppard Branch is officially opened by the North York Public Library Board in Unit 11 of the Jane Sheppard Mall, 16 November. Service to the public begins on 17 November.
- 1998 Jane/Sheppard Branch becomes part of the Toronto Public Library with municipal amalgamation, 1 January. Closed 25 August and reopened 8 September for refurbishment.
- 2002 Toronto Public Library Board approves "capital funding of the Jane Sheppard Neighbourhood Branch relocation in co-development through Shelter, Housing and Support," 15 July. The project with Youth Clinical Services (replaced by Toronto Community Housing Corporation in 2005) is to build affordable housing and a library branch at 1906 Sheppard Avenue West on the site of former No. 31 Police Station.
- 2009 Jane/Sheppard Branch in the Jane Sheppard Mall is closed to the public at 5:00 p.m., 31 January. New branch at 1906 Sheppard Avenue West opens on 2 April. The library has 650 square metres (7,000 square feet) of community space, double the size of the original location. Cannon Design Inc.

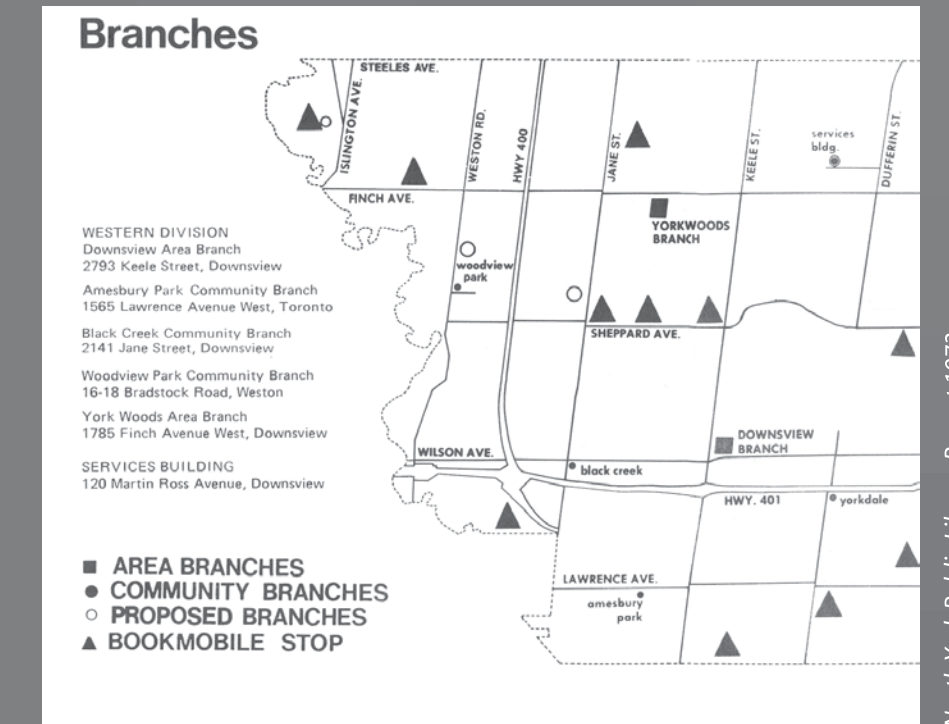
Bookmobile service starts 1959



Bookmobile schedule, 21 September 1959
Stops in the Jane Sheppard neighbourhood were at Sheppard Avenue West School and Calico Drive School.



Bookmobile fleet, 1965
Spenvally School became a bookmobile stop in 1964. The photograph was taken in the Don Mills Library parking lot.



Service in the North York Public Library's Western Division, 1973
Three bookmobile stops now were provided on Jane Street, including one at the Jane/Sheppard Mall, supplementing library service at one area branch and several community branches.

Jane/Sheppard Branch at the Jane Sheppard Mall, November 1988 - January 2009

Jane Sheppard Nears Completion

With November 16 set as the Official Opening date of the new Jane Sheppard Community Branch, construction within a very special 3,500 square feet of Jane Sheppard Mall is taking final form.

A whirlwind of excitement and elbow grease also emanates from York Woods Regional Branch where Jane Sheppard's collection and service framework is being assembled. To form Jane Sheppard's core collection, the new acquisitions stored at York Woods are to be integrated with the Northwood Deposit Collection.

Annamaria Luchetti, Jane Sheppard's new Branch Head,

has also been visiting the community's schools with fresh Jane Sheppard publicity. Patrons to the new library will be welcomed by recently appointed Assistant Branch Head Sylvia Kerr, and Sandra Olorico as part time clerk.

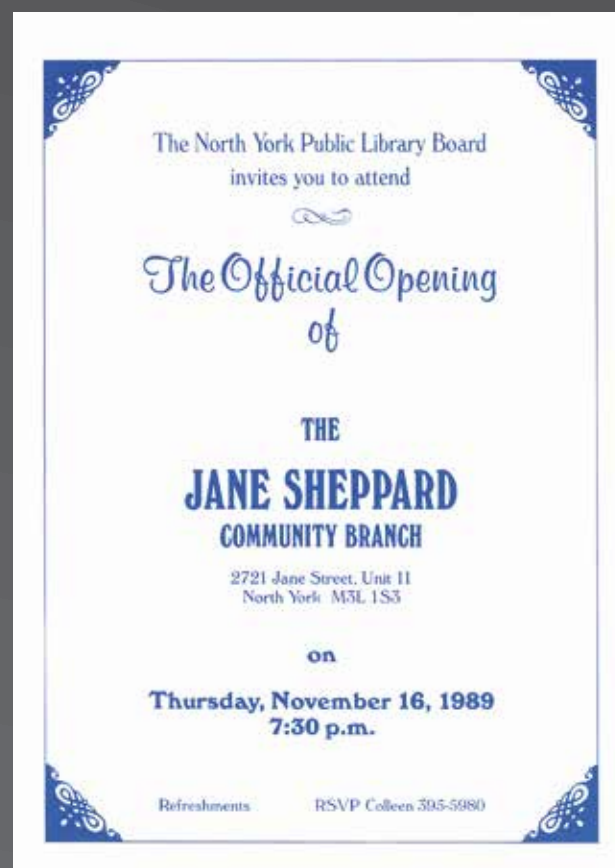
Library service to the Jane Sheppard community will be augmented by the addition of an Adult Literacy/Leading to Reading office within the library.

When the dust settles, all NYPL will be welcomed at the Staff Open House scheduled for Tuesday, November 21.

New Notes, August/September 1989



Branch Head Anna Maria Luchetti and Jim Paul fill shelves at the new Jane/Sheppard Branch, autumn 1989



Invitation to the official opening, 16 November 1989



Assistant Branch Head Sylvia Kerr serves customers at the official opening, 16 November 1989

*It's your Library

There is a lot for you at the Jane Sheppard Library.

Our collection includes a wide variety of books, magazines, compact discs, records, and cassettes for all age groups.

We also have a good selection of materials in Italian, and books in many other languages can be brought in for you to borrow.

We invite children and young adults to join us for storytimes, crafts, film programs, and special events for all ages.

Leading to Reading for children and a Literacy Program for adults offer help to those who want to improve their reading and writing skills.

Come in and see what we have to offer you!

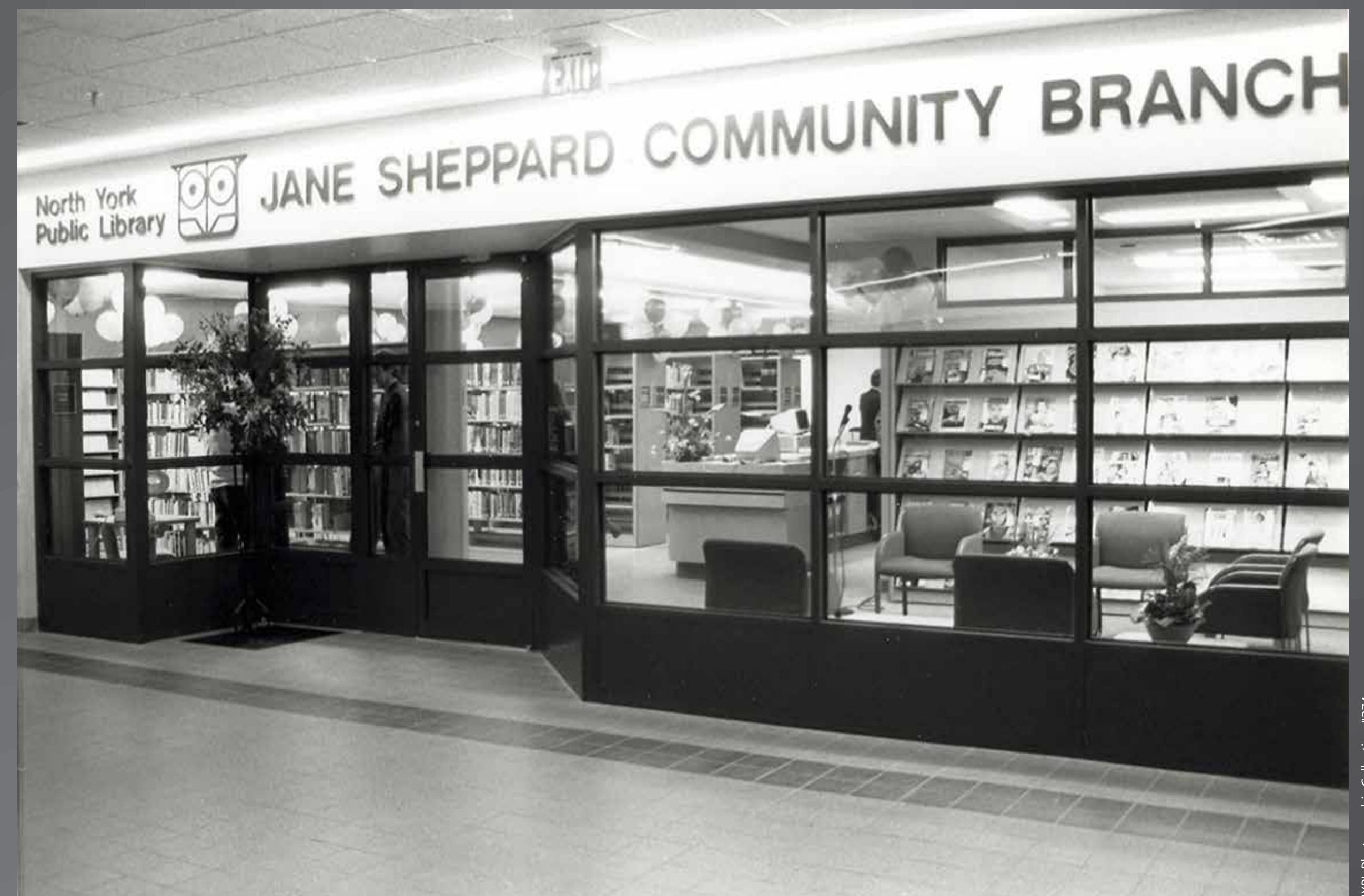
Library Hours

Tuesday & Thursday 12:30 p.m. to 8:30 p.m.
Wednesday & Friday 9:30 a.m. to 5:30 p.m.
Saturday 9:00 a.m. to 5:00 p.m.
Closed Sunday and Monday

Here's Where to Find Us!

JANE SHEPPARD LIBRARY
Jane Sheppard Mall
2721 Jane Street, Unit 11
North York, Ontario M3L 1S3
395-5996

It's your library, 1989



Front entrance to the Jane Sheppard Community Branch, Jane Sheppard Mall, 1989



Opening day notice, 17 November 1989
During its first Saturday of operation, Jane/Sheppard Branch circulated the most books of any community library in North York.



Board and staff at the official opening, 16 November 1989
L to R: Sandra Olorico, Councillor Barry Burton, Vice-Chairman, North York Public Library Board; Josephine Bryant; Marion Milne; Anna Maria Luchetti, Sylvia Kerr and Vickery Bowles.

Jane/Sheppard Branch at 1906 Sheppard Avenue West, opened 2 April 2009

Jane/Sheppard library moving

The Toronto Public Library branch in the Jane and Sheppard mall location will be closing permanently on Jan. 31 at 5 p.m. with plans to open a new library building twice the original size in March.

During the closure period, library customers can pick up holds at the York Woods Branch at 1785 Finch Ave. W., but can return borrowed materials to any branch.

Nearby branches include the Black Creek Branch at 1700

Wilson Ave. in the North York Sheridan Mall, Downsview Branch at 2793 Keele St., and Woodview Park Branch at 16 Bradstock Rd.

The new Jane/Sheppard branch, located at 1906 Sheppard Ave. W., is less than half a kilometre east of the original location.

When completed, the 7,000-square-foot neighbourhood library will feature service enhancements as well as a refreshed collection of library materials.

North York Mirror, 16 January 2009.

Jane/Sheppard Branch Opening

Toronto Public Library Board invites you to the opening of the newly relocated Jane/Sheppard Branch, 1906 Sheppard Avenue West (one block east of Jane Street).

Thursday, April 2, 2009 at 4 p.m.

Join us for family entertainment and refreshments.

RSVP to: Debbie Mai, 416-397-5945
dmair@torontopubliclibrary.ca

torontopubliclibrary.ca

Invitation to the relocated Jane/Sheppard Branch, 2 April 2009

Jane/Sheppard library gets Microsoft tech boost

Microsoft Canada will be donating \$20,000 in computer hardware, software and video games to the Jane/Sheppard branch of the Toronto Public Library.

The donation is being announced today in Mississauga. The software giant will be donating 14 refurbished Toshiba Tablet PCs, two Xbox video game systems and an assortment of games appropriate for various age groups.

As well, the software giant will be donating Microsoft Digital Literacy Curriculum, an e-literacy program that helps teach basic computer skills in more than 30 languages. "Relationships like this can make a significant difference," said TPL foundation president Heather Rumball. "With Microsoft's help we're making the Jane/Sheppard branch an even more attractive destination for today's youth."

The branch will open Thursday, April 2 to the public with a full suite of digital services, including a wireless network and gaming programs.

— David Nickle

North York Mirror, 25 March 2009.



Invitation to the relocated Jane/Sheppard Branch, 1906 Sheppard Avenue West, 2 April 2009
Architectural rendering by Cannon Design Inc.